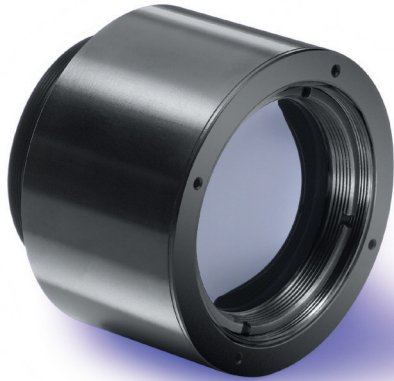
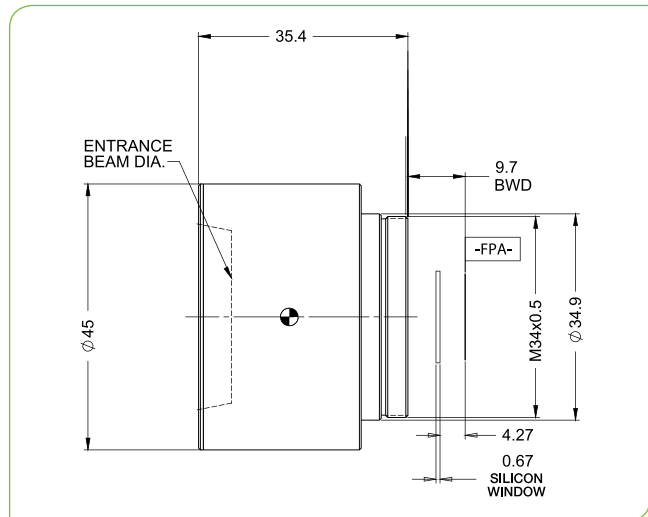


SupIR 35mm f/1.2, Fixed Athermalized 680111

TYPICAL ICD*



HD
FORMAT



| HFOV | 320x240 | 384x288 | 640x480 | 1024x768 |
|------|---------|---------|---------|----------|
| 25μ | 13.0° | 15.5° | | |
| 17μ | 8.9° | 10.6° | 17.6° | |
| 12μ | 6.3° | 7.5° | 12.5° | 19.7° |

| Property | Value | | | | |
|-------------------------------|--------------------------|-------------------|--------------|---------------|----------------|
| Optical | | | | | |
| Focal Length | 35mm | | | | |
| F# | 1.2 | | | | |
| Average transmission (8-12μm) | 93% (HD) | | | | |
| Back Focal Length | 22.62mm in air | | | | |
| Mechanical | | | | | |
| Focus Mechanism | Fixed | | | | |
| Depth of Field | 50m to infinity | | | | |
| Focus Range | 1m to infinity | | | | |
| Weight | 102gr | | | | |
| Max. Dimensions | Ø45mm x 35.4mm | | | | |
| Environmental | | | | | |
| Operation Temperature | -40°C to +80°C | | | | |
| Storage Temperature | -55°C to +85°C | | | | |
| Sealing | IP 67 front element only | | | | |
| Configurations | Weight (gr) | Dimensions | BWD** | Thread | Coating |
| 680111-005 | 102 | Ø45mm x 35.4mm | 9.7 | M34x0.5 | HD |
| 680111-006 | | | | | HC |

* The ICD drawing provided here is primarily a representation and may not accurately reflect the product's actual dimensions and specifications. For precise integration specifications contact your local sales representative.

** The BWD value is calculated for a unique detector setup with varying sealing windows in terms of thickness and material. For more details, contact your local sales representative.